



HORNER
CYCLING
FOUNDATION



CASCADE CYCLING CLASSIC
CRITERIUM

CASCADE CYCLING CLASSIC
TECHNICAL GUIDE
JUNE 14, 2025
BEND, OR

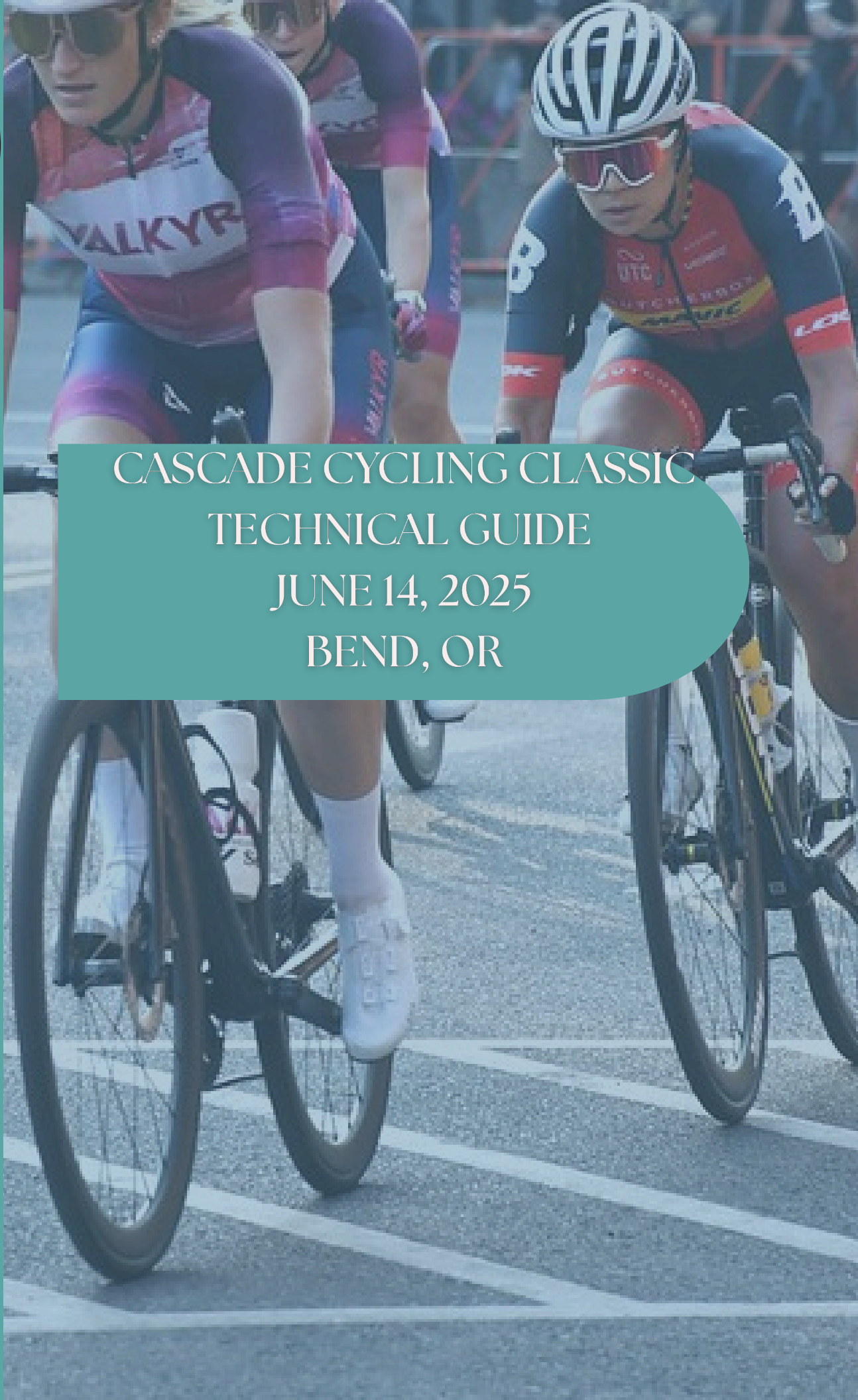




TABLE OF CONTENTS

●	Event and Officiating Staff.....	3
●	Race Day Schedule	4
●	Organizational Information.....	5-6
●	General Race.....	7-8
●	Emergency Medical Support.....	9
●	Payout Schedule.....	10-12
●	Sponsors.....	13
●	OBRA Championships.....	14
●	Parking.....	15
●	Course Maps.....	16-17
●	Supporting Downtown Businesses.....	18



CCCC OFFICIALS

Chief Referee.....	Dave Roth
Chief Judge.....	Terri Camp
Assistant Judge.....	Bill Hall
Pit Official.....	Chuck Kenlan
Finish Line Camera.....	Brian List
OBRA Championship Podium.....	Molly Cogswell-Kelley
Event Moto's.....	Henry Abel, Steven Bedford, Brad Ross, Dave Morrow
Neutral Support.....	Sagebrush Cycles, Shimano and Modus Sports
Promoter and Race Director.....	Molly Cogswell-Kelley
Course Director.....	Bart Bowen
Traffic Control Director.....	Scott Derdenger
Volunteer Coordinator.....	Cindy Lee
Race Announcer.....	Dave Campbell

Race Day Schedule

- 12:00 p.m. Open Cat 4/5, **40 min.**
- 12:50 p.m. Women Cat 3/4/5, Women Masters, NB Cat 3/4/5, **40 min.**
- 1:40 p.m. Cat 3 Open, **45 min.**
- 2:35 p.m. Junior Open & Women (15-16), (17-18), **30 min.**
- 3:15 p.m. Men Masters 40+, 50+, 60+, **45 min.**
- 4:10 p.m. Junior Open & Women (9-10), (11-12), (13-14), **25 min.**
- 4:45 p.m.-5:05 p.m. Kiddie Bike Sprint, **20 min.**
- 5:15 p.m.-5:30 p.m. Bend Classic Mile Run p/b FootZone Bend, **15 min.**
- 5:40 p.m. Pro Women Cat 1/2/3, **60 min.**
- 6:45 p.m. Battle of the Bikes, **20 min.**
- 7:10 p.m. Pro Women's Podium, **5 min.**
- 7:25 p.m. Pro Open Cat 1/2, **80 min.**
- 8:55 p.m. Pro Open Podium, **5 min.**

HORNER CYCLING FOUNDATION



The Horner Cycling Foundation is a 501(c)(3) nonprofit organization.

The Horner Cycling Foundation is a 501 (c)(3) nonprofit organization.

The Mission of the Horner Cycling Foundation is to create a junior road cycling team that is inclusive and accessible to all with a focus on skill development, team building and fostering a life-long love of cycling.

The Horner Cycling Foundation's 2025 cycling program is just getting started and is already bursting at the seams. While we were excited to see a core group of 10 young riders attending the weekly summer cycling program in 2024, attendance for the first few weeks of our expanded 2025 weekly training rides has more than doubled with 25 participants. Everyone is excited to ride and have fun together, training for the 2025 Cascade Cycling Classic Downtown Criterium on June 14th. Our free weekly training rides with Chris Horner and other elite level coaches will continue every Monday from April through August. It has been great to introduce a new group of kids to a life-long love of cycling!

To learn more, please go to www.hornercyclingfoundation.com.



GENERAL RACE

Packet Pickup

Pre-Race Packet Pickup:
Horner Law, LLP
250 NW Franklin Ave., Ste 101
Friday, June 13th, 5:30 p.m.-8:00 p.m.

Day of Race Packet Pickup:
Downtown Bend-OBRA Tent
Corner of Wall St. and Oregon Ave.
Saturday, June 14th, 11:30 a.m.-6:30 p.m.

Race Numbers

- OBRA single event memberships waived for all Pro Open and Pro 1/2 Women.
- OBRA single event memberships required by all non-OBRA members racing in the amateur divisions.
- Numbers must be worn on right side/vertical orientation.
- Numbers may not be folded or trimmed.
- You will receive a second number if you racing in more than one category.



Finishes, Prizes

- All racers must queue in the designated staging corral 10 minutes before the start of their race.
- After finishing, please do not congregate at the finish line.
- Payouts will be in the form of a check for Pros, cash for amateurs.
- Pickup your primes after your race at the announcing stage.

GENERAL RACE



- Free lap rule in effect but ends with a determined number of laps remaining and will be announced at the start line of each race by the Chief Referee for all races.
- All racers are responsible for knowing the course and following OBRA rules.
- Protests and appeals must be made within the time limits established by the OBRA rules.

Awards/Podiums

- You must show your race number to claim primes.
- Primes will be available after each race's results have been made final.
- A volunteer next to the announcer on stage will have your prime.
- The top three in each category will receive a Hydro Flask engraved with the CCC logo.
- The top three finishers must be at the podium 15 minutes following their race.

Results

- Finish order results will be posted to www.obra.org post event.
- Printed results will be posted after each race at the Registration OBRA tent.
- Results will also be posted on the [cascade_cycling_classic_crit](https://www.instagram.com/cascade_cycling_classic_crit) Instagram page and at cascadecyclingcrit.bsky.social

Neutral Support

- Neutral wheels will be provided by Modus Sports/Shimano.
- You may add your wheels to the pit.
- The pit will be located on Franklin Ave.
- Medical will be located at the start/finish area and at the Pit on Franklin Ave. Provided by Redbird Physio and High Desert Sports and Spine.



MEDICAL INFO



A fully staffed first aid station will be located near the start and finish area.
Medical support provided by Redbird Physio and High Desert Sports and Spine.
Here are additional local resources:

St. Charles Hospital
2500 Northeast Neff Road
(541) 382-4321
Open 24 Hours



High Lakes Urgent Care
1140 SW Simpson Ave. #100
Phone: (541)389-7741
Saturday & Sunday: 8:00 a.m. – 5:00 p.m.



HIGH DESERT
SPORTS & SPINE

BestMed Urgent Care
108 NW Sisemore St #120
(541) 213-2133,
Saturday & Sunday: 7 a.m. – 7 p.m.

Summit Health Urgent Care-Old Mill
815 Southwest Bond Street
541-382-2811
Saturday: 8:00 a.m. – 4 p.m.

Summit Health Urgent Care – Eastside
1501 NE Medical Center Dr.
(541) 706-6400
Saturday 8:00 am – 5:00 pm

St. Charles Urgent Care
61250 Southeast Coombs Place
(541) 706-5930
Saturday & Sunday: 8:00 a.m. – 6 p.m.

PRIZE PURSE

MEN/OPEN

Pro Cat 1/2
Cat 3
Cat 4/5
Masters 40+
Masters 50+
Masters 60+
Juniors

RACE WINNINGS

\$9,550
\$250
\$100
\$150
\$150
\$150
Awards /
Prizes

PRIMES

\$1,500
\$200
\$100
\$250 in
total for
Master's
race.
\$250

WOMEN

Pro Cat 1/2
Cat 3
Cat 4/5
Masters 40+
Masters 50+
Juniors

RACE WINNINGS

\$9,550
\$250
\$100
\$150
\$150
Awards /
Prizes

PRIMES

\$1,500
\$200
\$100
\$300 in
total for
the
Amateur
women
and N/B
races

PAYOUTS

PRO CAT 1/2 OPEN AMOUNT

1st	\$3,000
2nd	\$2,250
3rd	\$1,750
4th	\$1,000
5th	\$750
6th	\$500
7th	\$400
8th	\$300
9th	\$200
10th	\$100
11th	\$80
12th	\$70
13th	\$60
14th	\$50
15th	\$40
Total	\$9,550

PRO WOMEN 1/2 AMOUNT

1st	\$3,000
2nd	\$2,250
3rd	\$1,750
4th,	\$1,000
5th	\$750
6th	\$500
7th	\$400
8th	\$300
9th	\$200
10th	\$100
11th	\$80
12th	\$70
13th	\$60
14th	\$50
15th	\$40
Total	\$9,550

PAYOUTS

CAT 4/5 OPEN

AMOUNT

1st
2nd
3rd

\$60
\$25
\$15

CAT 4/5 WOMEN

AMOUNT

1st
2nd
3rd

\$60
\$25
\$15

CAT 3 OPEN

AMOUNT

1st
2nd
3rd

\$125
\$75
\$50

CAT 3 WOMEN

AMOUNT

1st
2nd
3rd

\$125
\$75
\$50

OPEN MASTERS 40+

AMOUNT

1st
2nd
3rd

\$75
\$50
\$25

WOMEN MASTERS 50+

AMOUNT

1st
2nd
3rd

\$75
\$50
\$25

OPEN MASTERS 50+

AMOUNT

1st
2nd
3rd

\$75
\$50
\$25

WOMEN MASTERS 40+

AMOUNT

1st
2nd
3rd

\$75
\$50
\$25

OPEN MASTERS 60+

AMOUNT

1st
2nd
3rd

\$75
\$50
\$25



Michelle
Mills REAL ESTATE

Horner Law, LLP
ATTORNEYS AT LAW

THANK YOU
SPONSORS



FOOTZONE



SOURCE WEEKLY



OBRA Junior and Masters Championship Info

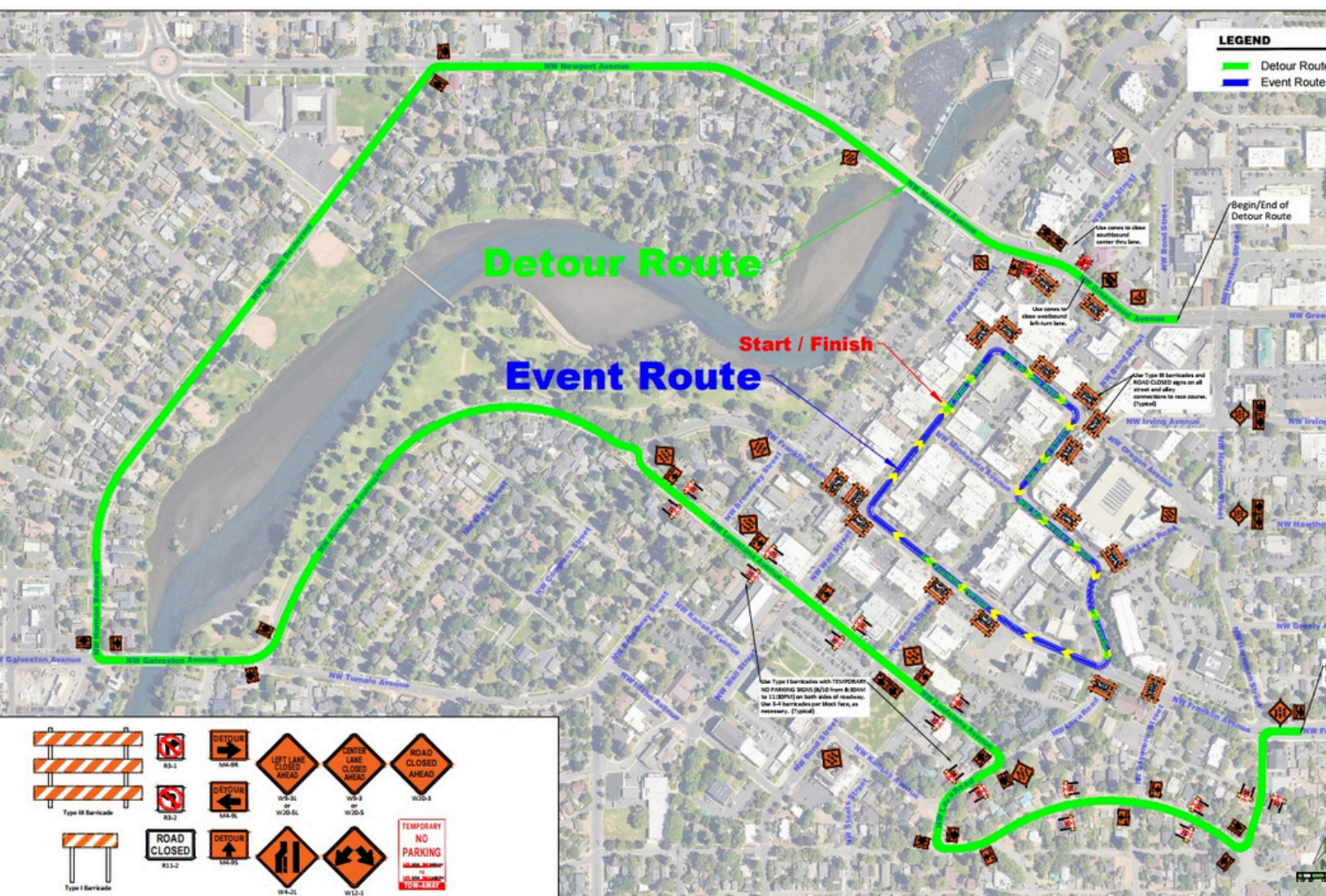
- Top 3 OBRA members will receive medals.
- The winners will receive the OBRA championship jersey.
- Top three will also win an engraved Hydro Flask.
- Non-annual members will still be able to race and be eligible for prize purse and prizes from the Horner Cycling Foundation.

DOWNTOWN BEND CRITERIUM PARKING PLAN

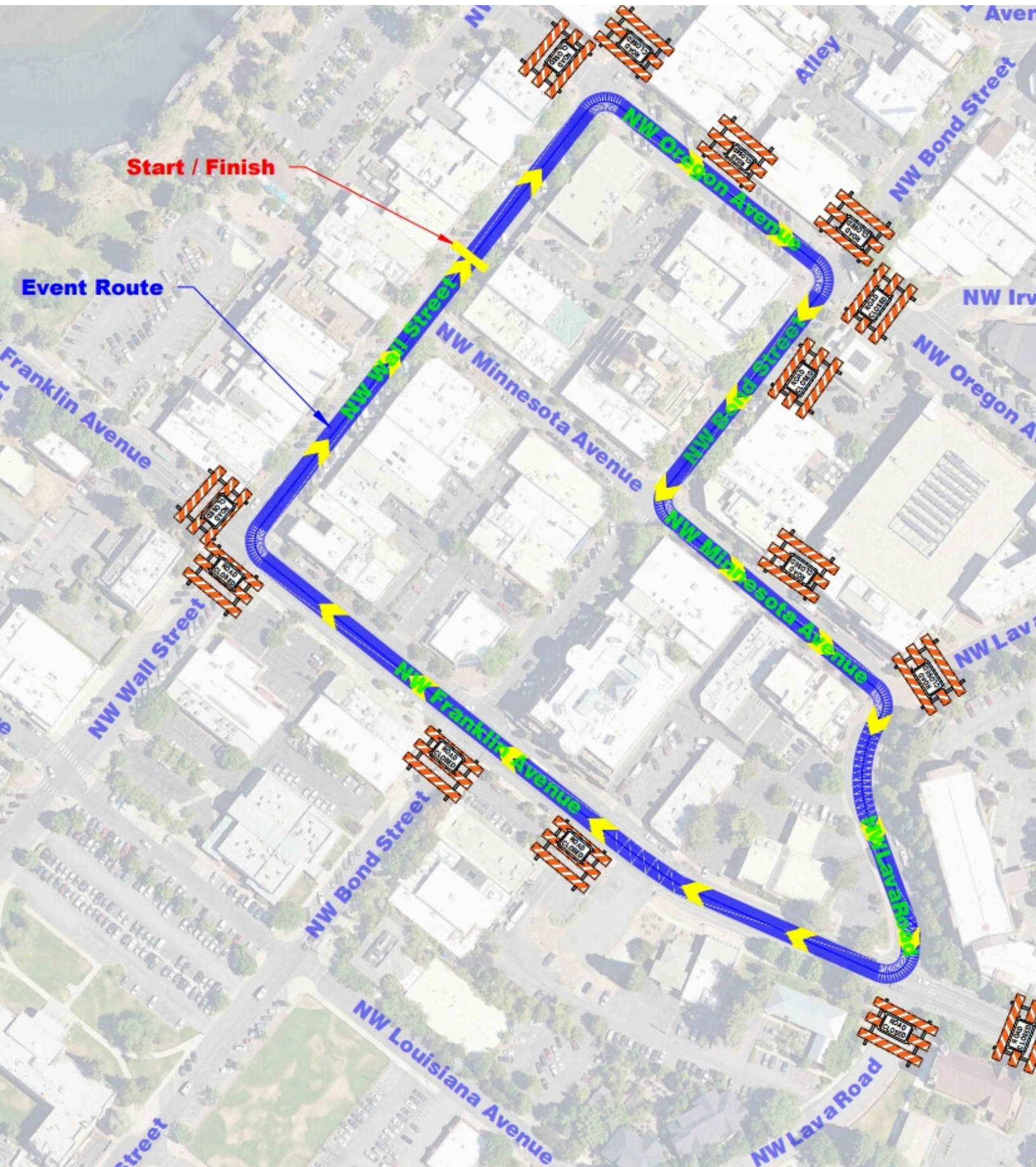
- Parking for racers, spectators, volunteers and event staff will be available at the following parking lots:
 - Centennial Parking Garage & Plaza. Main Entrance: 750 NW Lava Rd.
 - The Greenwood/Wall Lot: On the corner of NW Greenwood Ave. and NW Wall St.
 - The Newport Avenue Lot. Main Entrance: 70 NW Newport Ave.
 - The Troy Field Lot. Main Entrance: 51 NW Louisiana Ave.
 - South Mirror Pond Lot. Main Entrance: 801 NW Wall St.
 - North Mirror Pond Lot. Main Entrance: 801 NW Brooks St.
 - Outer downtown area, parking garage and surrounding area.
 - Accessible parking spaces will be available in all the downtown area parking lots.
- Additional Accessible Parking will be available at the N. and S. Mirror Pond Lots.**



Detour Route



Criterion Course





Shopping in downtown Bend



When you aren't racing, please make sure that you patronize local businesses in downtown Bend. We want all the shops to have a busy day.

While all shopping in downtown Bend is unique and wonderful, here is a list of the businesses that are supporting the Horner Cycling Foundation by giving back a portion of their profits on June 14th.

- **Pizza Mondo**
- **FootZone Bend**
- **Dudley's Book Shop Cafe**
- **Sports Vision Bend**
- **Dr. Liz Potvin at Sports Vision Bend**

